

ELMDENE INTERNATIONAL LIMITED  
3 KEEL CLOSE  
INTERCHANGE PARK  
PORTSMOUTH  
HAMPSHIRE  
PO3 5QD, UK

TEL: +44 (0) 23 9269 6638  
FAX: +44 (0) 23 9266 0483

[www.elmdene.co.uk](http://www.elmdene.co.uk)

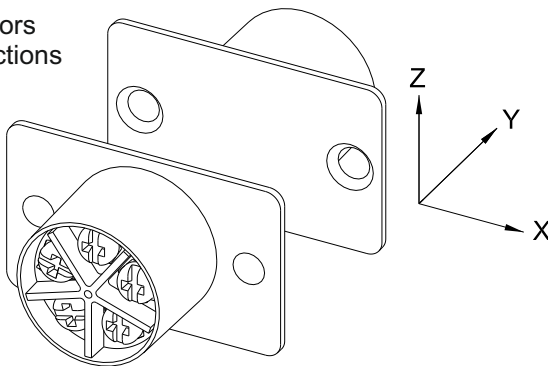


## QF-5 Contact Instruction Sheet

Product designed to meet the requirements of EN 50131-2-6:2008 **Grade 1** and Environmental **Class II**. Suitable for use in systems designed to comply with PD6662:2017

### Features

- Flush terminal contact
- Standard Ø20 mm fitting
- 3 spare terminals for EOL resistors
- Easily identifiable switch connections

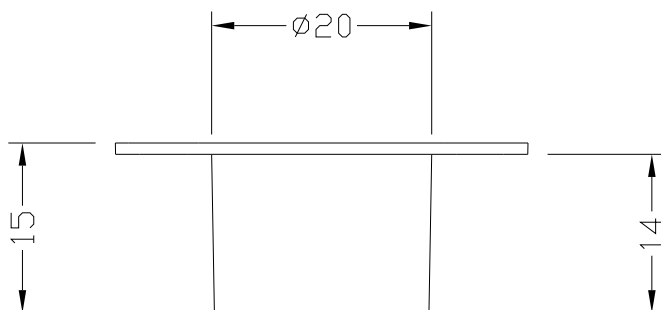


### Operating Distances

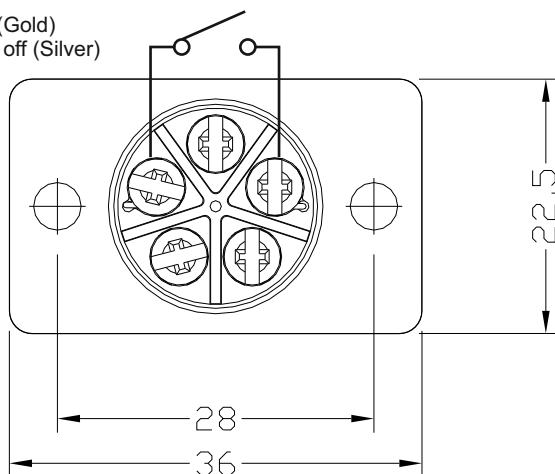
		Switch mounted on Non-Magnetic Surface (e.g. Wood, PVC, Aluminum)	*Switch mounted on Magnetic Surface (e.g. Iron, Steel)
Y	Min Close (mm)	16	9
	Max Open (mm)	23	13
+/- X	Min Close (mm)	6	3 <sup>#</sup>
	Max Open (mm)	10	7 <sup>#</sup>
Z	Min Close (mm)	22	9 <sup>#</sup>
	Max Open (mm)	31	15 <sup>#</sup>

\* For guidance purposes only, <sup>#</sup>At Y = 6mm

## Fixing Positions



Contact Pair - 2 off (Gold)  
Spare Terminals - 3 off (Silver)



## Specifications

### Contact

Material	Rhodium
Power Handling	10VA
Voltage Rating	100Vdc, 150Vac
Max Current Rating - switch	1.0A Max
Current Rating - carry	1.5A Max
Resistance	<300mohms
Operating Life	>1 x 10 <sup>6</sup> operations

### Housing

Material	Plastic - ABS
Flange Dimensions	36 x 22.5mm
Body Dimensions	$\varnothing 20$ mm x 14mm
Mounting Screws	M3
Magnet - Fixing Dimensions	28mm centres
Temperature Range	-10°C to +40°C